

DCS 6000 Conference Management Software Suite



Includes

SW 6xxx

Requires

Requires a Central Control Unit.

CU 6005
CU 6011

Used With

CU 6005
CU 6010

Configuration

SW 6000 - DCS 6000 Conference Management Software Startup Package for 1 System
SW 6005 - DCS 6000 Conference Administrator Application Software
SW 6008 - DCS 6000 Conference User Application Software
SW 6010 - DCS 6000 Microphone Control Software
SW 6012 - DCS 6000 Agenda Handling Software
SW 6015 - DCS 6000 Messaging Software
SW 6018 - DCS 6000 Mimic/Synoptic Software
SW 6020 - DCS 6000 Delegate Database Software
SW 6032 - DCS 6000 Interpretation Control Software
SW 6050 - DCS 6000 Multi-Language Screens Software
SW 6060 - DCS 6000 Parliamentary Voting Control Software
SW 6062 - DCS 6000 Parliamentary Voting Client Software
SW 6070 - DCS 6000 Chip Card Registration Software
SW 6071 - DCS 6000 Chip Card Programming Software
SW 6080 - DCS 6000 Multi-Room Control Software
SW 6085 - DCS 6000 Streaming Application Control Software
SW 6086 - DCS 6000 Web Service Interface Software
SW 6090 - DCS 6000 Conference Display Application Software
SW 6232 - DCS 6000 External Control Application Software
SW 6901 - DCS 6000 SQL Server 2000 CPU License
SW 6910 - DCS 6000 SQL Server 2000 Server License
SW 6911 - DCS 6000 SQL Server 2000 Client License

The **SW 6000 Conference Management Software Suite** is PC software that provides unparalleled conference management capabilities to the operator, conference chair and/or all meeting participants. The graphical user interface is very ergonomic and can be tailored to the individual user's requirements. The software suite can run on one computer or on multiple computers via a client/server architecture. Hundreds of PC clients can be linked making it possible to give every delegate a computer with touch-screen fully integrated with the conferencing system. Data is stored in an SQL database format and can easily be interchanged with other Windows® applications.

The **SW 6000 Conference Management Software Startup Package for 1 System** is the core of any computer controlled conference system. It contains the Conference User Interface (CUI) to connect to Central Control Unit via RS-232 data communication. It also contains a license for 1 PC for the SW 6005 Conference Administration Application (CAA). Also included is a utility to migrate and backup the database of the system as well as the Microsoft SQL Server Desktop Engine (MSDE).

The **SW 6005 Conference Administration Application (CAA)** is used by conference administrators to enter the conference settings. A license for one PC is included in the SW 6000 Startup Package, additional licenses are required if the application is to run on multiple PC's.

The **SW 6008 Conference User Application (CUA)** provides the interface to control the conference. Based on the installed software modules the Conference User Application provides microphone on/off control and control of interpretation channels, voting sessions, delegate information, agenda and messaging. The graphical user interface can be customized for each type of user to give conference chairs, interpretation managers, operators, administrators and even individual delegates the relevant control options. When configured for a delegate, a PC with the CUA application becomes another delegate unit in the conference. In all systems, at least one CUA Software is required and one SW 6008 license per user PC.

The **SW 6010 Microphone Control Software** enables users to remotely switch conference units on/off from a delegate list. Also the request-to-speak list can be modified, speech time limits can be imposed and individual microphone sensitivity and loudspeaker gain can be adjusted. Requires the SW 6000 Startup Package and the SW 6008 Conference User Application.

The **SW 6018 Mimic/Synoptic Software** offers microphone control similar to the Microphone Control Software from a geographical room lay-out screen, making the interaction very intuitive. Requires the SW 6000 Startup Package and the SW 6008 Conference User Application.

The **SW 6060 Parliamentary Voting Control Software** adds Yes/No/Abstain voting capabilities to the SW 6000 Software Suite. The delegates can cast their vote using a conference unit or a PC running the CUA application. The result of the voting session can be viewed on a conference unit, on a hall display and stored in the database and printed. Requires the SW 6000 Startup Package, the SW 6008 Conference User Application and the FL 6000 4x feature license on the Central Control Unit.

The **SW 6062 Parliamentary Voting Client Software** enables delegates to cast Yes/No/Abstain votes from the CUA application, one license is needed per voting delegate.

The **SW 6012 Agenda Handling Software** enables the conference administrator to create an agenda and display it on delegate unit screens and/or hall displays. Requires the SW 6000 Startup Package and the SW 6008 Conference User Application.

The **SW 6015 Messaging Software** enables the conference administrator, chair or operator to send text messages to delegate unit screens and/or hall displays. Requires the SW 6000 Startup Package and the SW 6008 Conference User Application.

The **SW 6020 Delegate Database Software** enables the conference administrator to create or import an SQL database with delegate names and information so delegates can be identified by name instead of ID number. Different types of users can be created that have different authorizations. Requires the SW 6000 Startup Package and the SW 6008 Conference User Application.

The **SW 6032 Interpretation Control Software** enables the operator or interpretation manager to remotely configure, monitor and control the interpretation desks. Requires the SW 6000 Startup Package and the SW 6008 Conference User Application.

The **SW 6050 Multi-language Screens Software** displays other languages than English on the Conference User Application (CUA).

Chip Cards can be issued to and used by delegates to login to the system. The **SW 6070 Chip Card Registration Software** manages delegates logging in with a chip card and the SW 6071 Chip Card Programming Software allows the CP 6000 to encode the chip cards. Requires the SW 6000 Startup Package and the SW 6008 Conference User Application.

The **SW 6080 Multi-Room Control Software** gives the operator simultaneous monitoring and control capabilities over multiple meeting rooms. Requires the SW 6000 Startup Package.

The **SW 6085 Streaming Application Control Software** enables the conference administrator or operator to record conference audio and video or stream it live over the web. Requires the SW 6000 Startup Package and SW 7001 Streaming & Archiving Server/Client Software Package.

The **SW 6086 Web Service Interface** enables the conference administrator or operator to record conference delegate name, agenda and/or voting information or stream it live over the web. Requires the SW 6000 Startup Package and SW 7001 Streaming & Archiving Server/Client Software Package.

The **SW 6090 Conference Display Application (CDA)** displays conference information such as the agenda, voting results and speakers list on plasma/lcd screens or video projectors. The content of each screen can be customized.

The **SW 6232 External Control Application (ECA)** enables an AMX/Crestron controller to control the DCS 6000 system relayed thru a PC with SW6000 software. The AMX/Crestron device can also communicate directly with the CU without the ECA but then the SW 6000 cannot be used simultaneously.

If more than 10 PC are connected it is recommended to use the Microsoft SQL Database server (SW 6901, SW 6910 & SW 6911) instead of the standard included SQL Served Desktop Engine.

Accessories



EC 6232-01

DIS D-sub DB9 RS232 Cable 39.37 in. (1 m)

RS232 extension cable to connect the DCS 6000 central control unit to a PC or an AMX/Crestron control device. It is also used to inter-connect multiple CDS 4000 central control units together or a CU to a MC 4000 Microphone Control Panel.



EC 6232-02

DIS D-sub DB9 Cable 6.6 ft. (2 m)

RS232 extension cable to connect the DCS 6000 central control unit to a PC or an AMX/Crestron control device. It is also used to inter-connect multiple CDS 4000 central control units together or a CU to a MC 4000 Microphone Control Panel.



EC 6232-05

DIS D-sub DB9 Cable 6.6 ft. (2 m)

RS232 extension cable to connect the DCS 6000 central control unit to a PC or an AMX/Crestron control device. It is also used to inter-connect multiple CDS 4000 central control units together or a CU to a MC 4000 Microphone Control Panel.



EC 6232-10

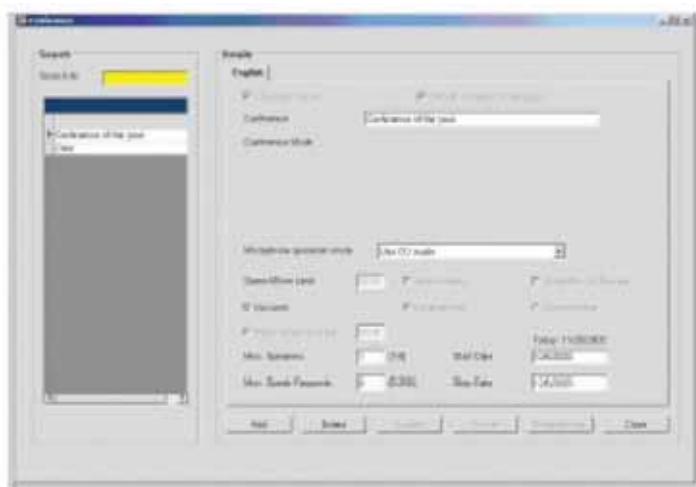
DIS D-sub DB9 RS232 Cable 32.8 ft. (10 m)

Extension cable, designed to connect the central control unit to conference units or to interconnect delegate units when the standard 6.6 ft. (2 m) cable affixed to the conference unit is not long enough. Provides an additional 6.6 ft. (2 m).

	Specifications	SW 6000
Interconnections	PC with CUI to Central Control Unit	RS-232 (serial port or USB port with USB-to-serial converter)
	Computer to Computer	Local Area Network via Ethernet
Computer Requirements	Minimum Processor	Pentium 1.5G
	Memory	Min. 256 Mb Ram (512Mb for database computer)
	Hard Disk	2 GB (20 GB for database computer)
	Networking	Ethernet card
		for CUI application RS-232 or USB port
	Graphics	VGA screen resolution 1024 x 768
	Inputs	CD-ROM drive
Operating System	Windows 2000 SP3, XP SP1, Vista	



CUA



CAA

Required License	Base	PC Control interface for technician, chair, delegate	Conference administration on multiple PC's	Remote Microphone Control from list	Agenda Handling	Messaging	Remote Microphone Control from geographical room lay-out	Multiple user profiles	Remote interpretation control	Other languages than English on GUI	Running Yes/No/Abstain votes	Casting Yes/No/Abstain vote from a delegate PC	Running multiple choice votes	Casting multiple choice vote from a delegate PC	Using chip cards as login with conference units	Registering delegates at the conference room entrance	Control multiple rooms from one interface	Web stream the meeting	Run 3rd party applications on delegate PC with CUA	Display meeting information on flat screen/video projector	AMX/Creston control concurrent with SW 6000	More than 10 PC's in one system
SW 6000 Basic Software package includes	1																					
Recommended Application																						
SW 6008 Conference User Application (CUA)	1	1/PC																				
Additional modules for added functionality																						
SW 6005 Conference Administration Application (CAA) licenses for additional PC's	1		1/aPC																			
SW 6010 Microphone Control	1	1/PC		1																		
SW 6012 Agenda Handling	1	1/PC			1																	
SW 6015 Messaging Function	1	1/PC				1																
SW 6018 Mimic/Synoptic	1	1/PC					1															
SW 6020 Database and Delegate Information	1	1/PC						1														
"	1	1/PC						1														
SW 6032 Interpretation control	1	1/PC							1													
SW 6050 Multi-language Screens	1	1/PC								1												
SW 6060 Parliamentary Voting Control	1	1/PC									1											
SW 6062 Parliamentary voting/client	1	1/PC									1	1/PC										
SW 6065 Multi-voting	1	1/PC											1									
SW 6067 Multi-voting, client	1	1/PC											1	1/PC								
SW 6070 Chip Card Registration	1	1/PC													1							
SW 6071 Chip Card Programming	1	1/PC													1							
SW 6075 Access Control	1	1/PC														1						
SW 6080 Multiple room control	1																1					
SW 6085 Streaming Application control	1																	1				
SW 6086 Web service interface	1																		1			
SW 6090 Conference Display Application (CDA)	1	1/PC																		1/dPC		
SW 6232 External Control Application (ECA)	1																				1/g	
SW 6901 SQL Server 2000 - CPU license	1																					1
SW 6910 SQL Server 2000 - Server license																						1/s
SW 6911 SQL Server 2000 - Client license																						1/cl

Functionality		Required License																						
		Base	PC Control interface for technician, chair, delegate	Conference administration on multiple PC's	Remote Microphone Control from list	Agenda Handling	Messaging	Remote Microphone Control from geographical room lay-out	Multiple user profiles	Remote interpretation control	Other languages than English on GUI	Running Yes/No/Abstain votes	Casting Yes/No/Abstain vote from a delegate PC	Running multiple choice votes	Casting multiple choice vote from a delegate PC	Using chip cards as login with conference units	Registering delegates at the conference room entrance	Control multiple rooms from one interface	Web stream the meeting	Run 3rd party applications on delegate PC with CUA	Display meeting information on flat screen/video projector	AMX/Cresstron control concurrent with SW 6000	More than 10 PC's in one system	
CU 6005/6010 Feature License	-1B Conference Units, max. 100																							
	-1C Conference Units, max. 500																							
	-1D Conference Units, max. 1000*																							
	-1E Conference Units, max. 3800*																							
	-2A Encrypted sound, max. 50 Units																							
	-2B Encrypted sound, max. 100 Units																							
	-2C Encrypted sound, max. 500 Units																							
	-2D Encrypted sound, max. 1000 Units*																							
	-2E Encrypted sound, max. 3800 Units*																							
	-3A Vox, Voice Activation, max. 50 Units																							
	-3B Vox, Voice Activation, max 100 Units																							
	-3C Vox, Voice Activation, max. 500 Units																							
	-3D Vox, Voice Activation, max. 1000 Units*																							
	-3E Vox, Voice Activation, max, 3800 Units*																							
	-4A Voting, max. 50 Units											1	1											
	-4B Voting, max. 100 Units											1	1											
	-4C Voting, max. 500 Units											1	1											
	-4D Voting, max. 1000 Units*											1	1											
	-4E Voting, max. 3800 Units*											1	1											
-5 Interpretation Channels 1-8																								
-5 Interpretation Channels 1-16																								
-5 Interpretation Channels 1-31*																								
-6 Voting protocol at RS 232 Interface*																								
*	Only available for CU 6010																							
1	1 per system																							
1/PC	1 per PC																							
1/aPC	1 per additional PC																							
1/dPC	1 per display PC																							
1/g	1 per gateway																							
1/s	1 per SQL server																							
1/cl	1 per SQL client																							

Frequently Asked Questions

Q Do I need software to use the voting feature?

A Software is required to handle the voting, results, display etc.

Q Does the system work with third party control companies such as AMX or Crestron

A Yes, However the ECA SW 6232 software is recommended.

Q Can I install DCS software on two or more PCs?

A Yes, unlimited in a LAN.